

# Algebra lesson 6 Graphing linear equations quiz answers

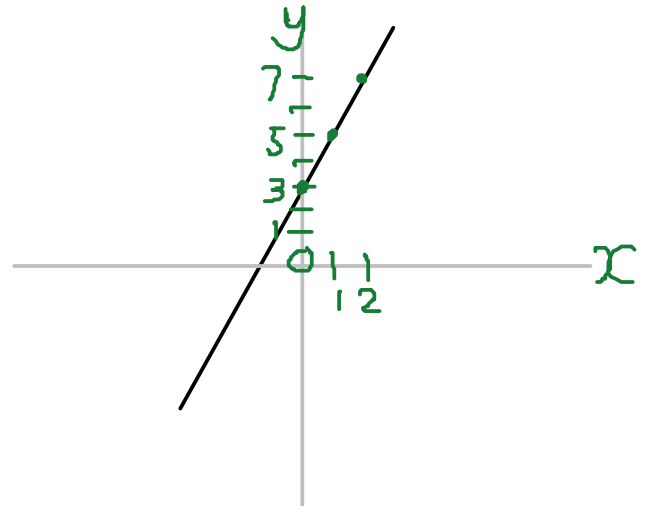
Monday, December 09, 2013

8:14 PM

For the following equations, draw a table of values and then plot the graph.

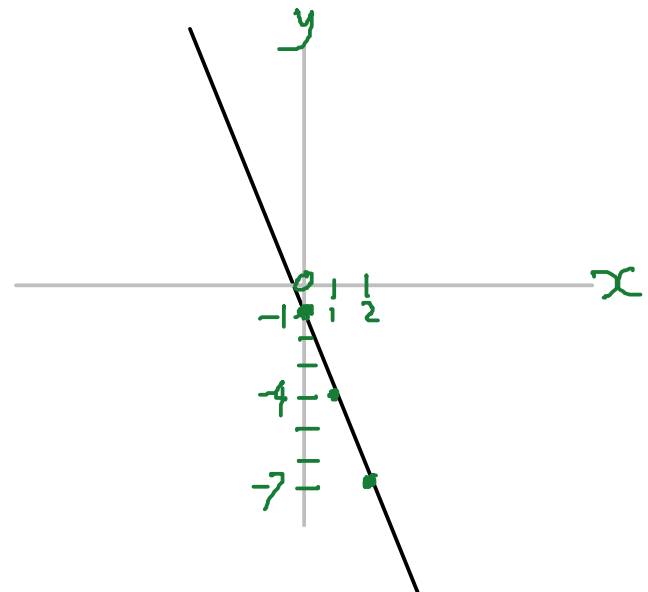
1)  $y = 2x + 3$

x	0	1	2
y	3	5	7



2)  $y = -3x - 1$

x	0	1	2
y	-1	-4	-7



3)  $x + y = 5$

(hint: Rearrange to make y the subject)

x	0	1	2
y	5	4	3

$$\begin{aligned}x + y - x &= 5 - x \\y &= 5 - x\end{aligned}$$

