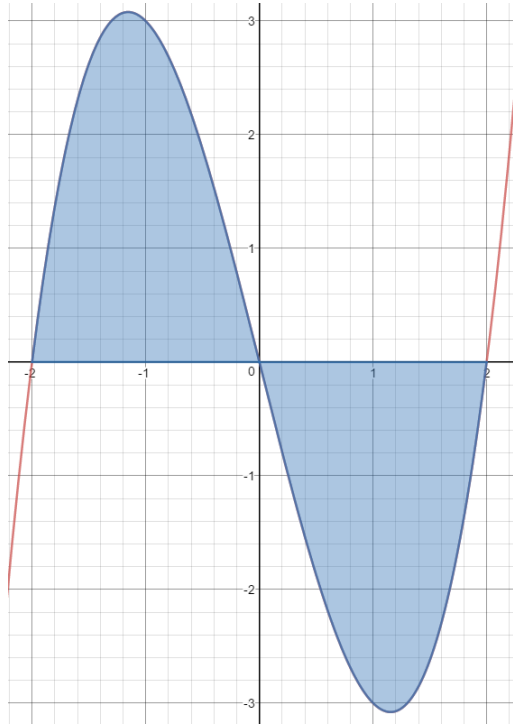


# Integral Calculus lesson 6 - Area bounded by the curve pt3

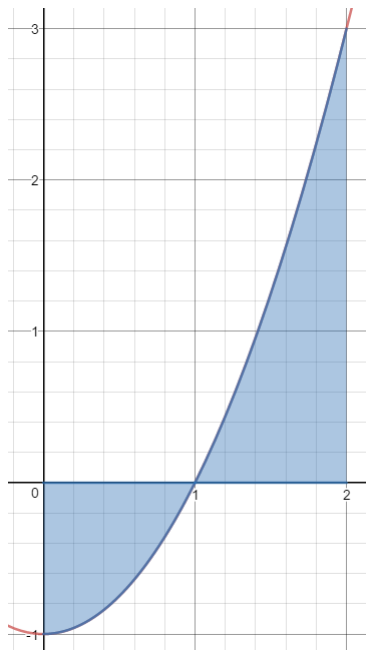
Magic Monk Tutorials

## 1 Evaluate the following:

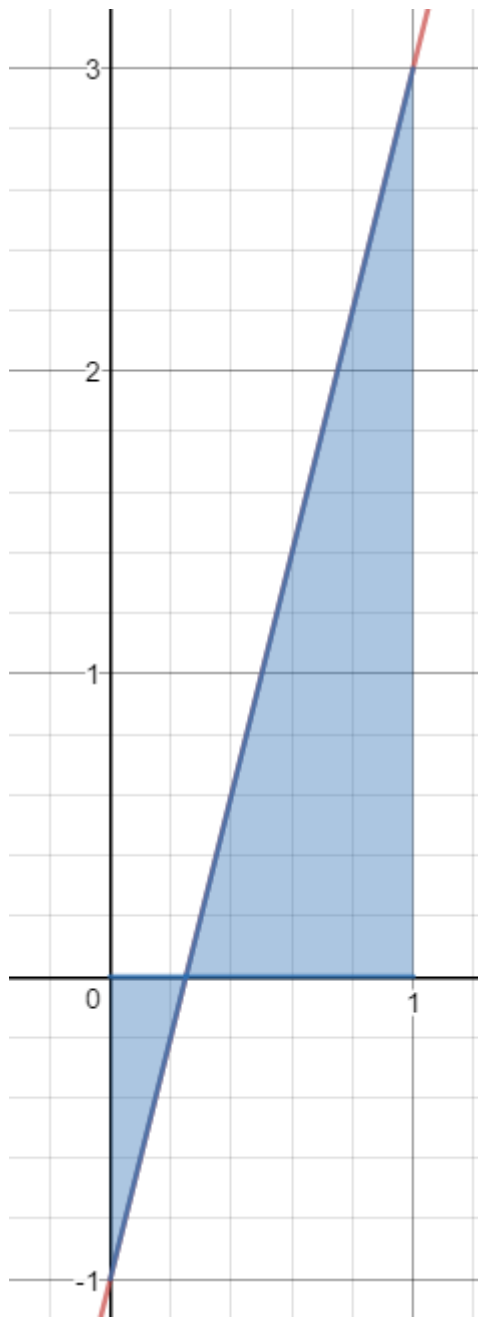
1.1 The shaded area of the curve (i.e. between  $x=-2$  and  $2$ )  $y = x^3 - 4x$



1.2 The shaded area of the curve (between  $x=0$  and  $2$ )  $y = x^2 - 1$



1.3 The shaded area of the curve  $y = 4x - 1$



- 2 Find the area of the curve  $y = \sqrt{x} - 1$  between 0 and 4. Remember to plot the curve first, and Keep in mind that this curve crosses the x axis at  $x=1$ .