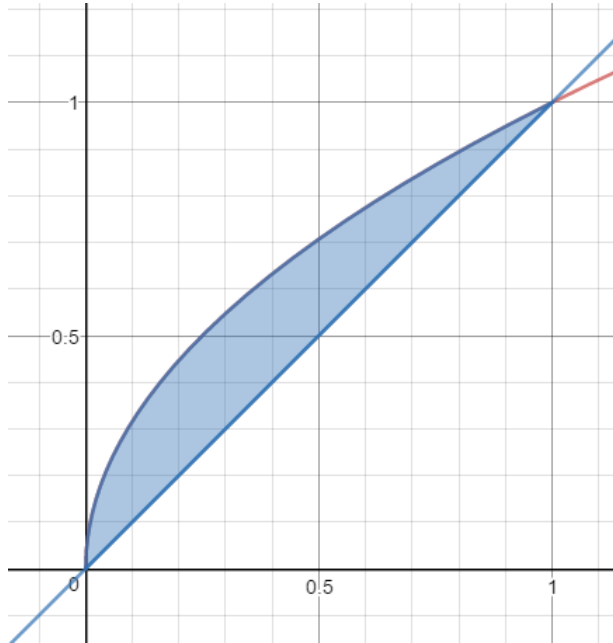


Integral Calculus lesson 8 - Area bounded by 2 curves pt2

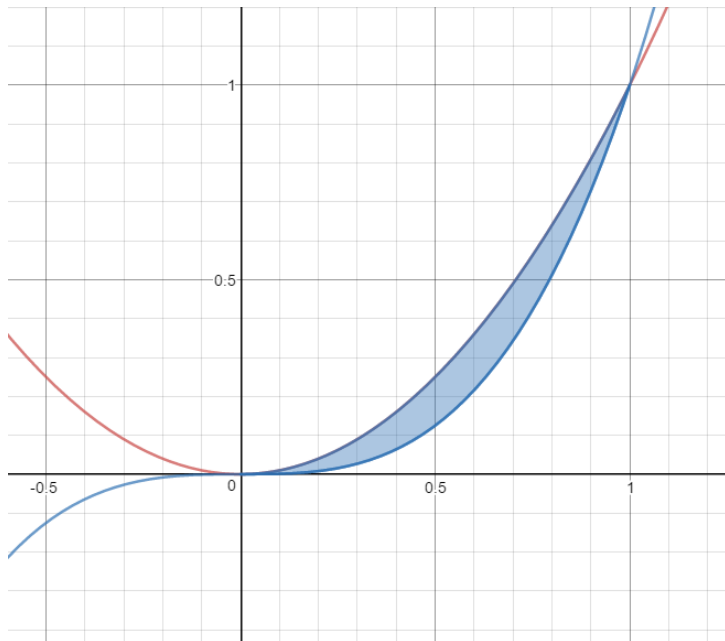
Magic Monk Tutorials

1 Evaluate the following using the method in Integration Lesson 8 and notice how much easier the questions are.

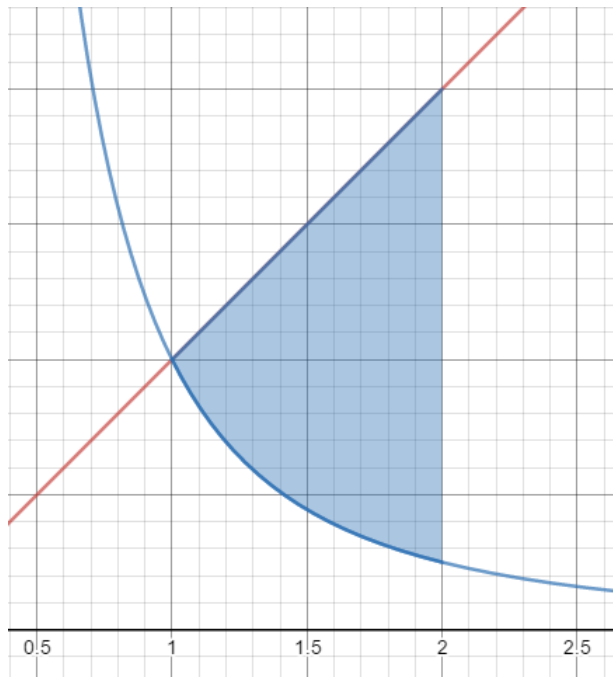
1.1 The shaded area between the curves $y = \sqrt{x}$ (in red) and $y = x$ (in blue)



1.2 The shaded area between the curves $y = x^2$ (in red) and $y = x^3$ (in blue)



1.3 The shaded area between the curves $y = x$ (in red) and $y = \frac{1}{x^2}$ (in blue) between $x=1$ and 2



1.4 The shaded area between the curves $y = x^3 - 2x + 4$ (in red) and $y = x + 2$ (in blue)

